

Legend
I= Switching position >=
Spring return
O= Key
removable position

Key actuator, maintained RRJ55A14

Description:	including two keys other lock types on request
Category:	Key switches (momentary/maintained)
Series:	RONTRON-R-JUWEL
Panel cut-out:	Ø 22.3 mm
Protection class:	II (protective insulation)
Degree of protection:	IP65
Switching function:	maintained action
Illumination:	no
With labelling option:	no
Front bezel	silver-coloured
Shape:	round

Optional accessory



Protective lid made of TPE AK22RRSW



AS-Interface slave ASI_BZ



Contact block, momentary AZ2N



Contact block, momentary AZ4I



Contact block, momentary AZ4O



Contact block, momentary BZI



Contact block, momentary BZII



Contact block, momentary BZIIK



Contact block, momentary BZIIK_AU



Contact block, momentary BZII_AU



Contact block, momentary BZIK



Contact block, momentary BZIK_AU



Contact block, momentary BZI_AU



Contact block, momentary BZO



Contact block, momentary BZOI



Contact block, momentary BZOIK



Contact block, momentary BZOIK_AU



Contact block, momentary BZOI_AU



Contact block, momentary BZOK



Contact block, momentary BZOO



Contact block, momentary BZOOK



Contact block, momentary BZOOK_AU



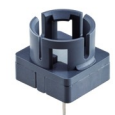
Contact block, momentary BZOO_AU



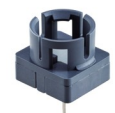
Contact block, momentary BZO_AU



Contact block, momentary CT2



Contact block, momentary CTF



Contact block, momentary, for 250V~ CTF_250



Contact block, momentary CTP_485



Contact block, momentary CZTP



Contact block, momentary CZTP2



Insulated plastic enclosure, 1 mounting hole DIRL1V-R22



Insulated plastic enclosure, 1 mounting hole DIRL1VGB-R22



Insulated plastic enclosure, 2 mounting holes DIRL2V-R22



Insulated plastic enclosure, 3 mounting holes DIRL3V-R22



Insulated plastic enclosure, 3 resp. 4 mounting holes DIRL4V-R22



Standard spare keys ESMIC482



Contact block, momentary FRTFI



Contact block, momentary FRTFII



Contact block, momentary FRTFII_AU



Contact block, momentary FRTFI_AU



Contact block, momentary FRTFO



Contact block, momentary FRTFOI



Contact block, momentary FRTFOI_AU



Contact block, momentary, 2NC FRTFOO



Contact block, momentary FRTFOOI



Contact block, momentary FRTFOOI_AU



Contact block, momentary, 2NC FRTFOO_AU



Contact block, momentary FRTFO_AU



Contact block with 4-pole M12 connector, momentary FRTIL_C009



Contact block with 5-pole M12 connector, momentary FRTIL_C119



Contact block with 4-pole M12 connector, momentary FRTI_C007



Contact block with 5-pole M12 connector, momentary FRTI_C117



Contact block with 4-pole M12 connector, momentary
FRTOI_C008



Contact block with 5-pole M12 connector, momentary
FRTOI_C118



Contact block with 4-pole M12 connector, momentary
FRTOO_C001



Contact block with 5-pole M12 connector, momentary
FRTOO_C111



Contact block with 4-pole M12 connector, momentary
FRTO_C006



Contact block with 5-pole M12 connector, momentary
FRTO_C116



Contact block, momentary FRTPI



Contact block, momentary FRTPII



Contact block, momentary FRTPII_AU



Contact block, momentary FRTPI_AU



Contact block, momentary FRTPO



Contact block, momentary FRTPOI



Contact block, momentary FRTPOO



Contact block, momentary FRTPOOI



Contact block, momentary FRTPOOL_AU



Contact block, momentary FRTPOO_AU



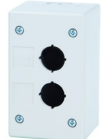
Contact block, momentary FRTPO_AU



Insulated plastic enclosure, 1 mounting hole IRL1M



Insulated plastic enclosure, 1 mounting hole IRL1M_GELB



Insulated plastic enclosure, 2 mounting holes IRL2M



Insulated plastic enclosure, 3 mounting holes IRL3M



Insulated plastic enclosure, 5 mounting holes IRL5M



Protective lid, sealable KDP22RR



Robust protective lid, sealable KDPR22RR



Robust protective lid, sealable KDPR22RR_SW



LED light ring for status indication or additional illumination
LR22K_24B



LED light ring for status indication or additional illumination
LR22K_24G



LED light ring for status indication or additional illumination
LR22K_24R



RGB LED light ring for status indication or illumination
LR22K_24RGB



Two-coloured alternate LED-illuminated ring for status indication
LR22K_24R_G



LED light ring for status indication or additional illumination
LR22K_24W



LED light ring for status indication or additional illumination
LR22K_24Y



External nameplate holder RRJABT



Insulated plastic enclosure with 1 mounting hole SIL22/1



High insulated plastic enclosure with 1 mounting hole SILH22/1

